

The Cradlepoint IBR900 Series Router is a ruggedized, Gigabit-Class LTE networking platform. It is designed for persistent connectivity across a wide range of in-vehicle and mobile applications as well as portable or fixed IoT installations. The IBR900 Series is available with either Mobile or IoT NetCloud Service plans, which provide features optimized for the differing deployments.

High Performance Mobile Connectivity

For organizations that depend on field forces and mobile networks, the Cradlepoint IBR900 Series Router with the NetCloud Mobile service plan provides a ruggedized GPS-enabled, in-vehicle network solution. When coupled with the Advanced Mobile service plan, it provides threat management, web filtering, application visibility, analytics, and advanced GPS functionality including location tracking and cellular coverage maps. The IBR900 accommodates environmentally harsh environments while delivering enterprise-class standards of reliability, scalability, comprehensive management, and security.

Ruggedized IoT Solution

When coupled with the NetCloud Ruggedized IoT service plan, the IBR900 provides a compact, ruggedized, 4G LTE router solution for connecting and protecting IoT devices at scale. It is ideal for IoT deployments including oil and gas monitoring, Smart City infrastructure, and other IoT deployments operating under harsh conditions. With an extensive list of safety and hardening certifications, it can be confidently deployed in the field, in buildings, or in embedded systems to deliver complete visibility, security, and control of connected devices anywhere.



[Product Page](#)



[NetCloud Service](#)

We care about your privacy.

Ericsson Enterprise Wireless Solutions uses cookies and other methods to process the personal data that you provide in order to customize content and your site experience, analyze our traffic, and personalize our advertising. For more information on how we use your personal data, please visit our [Privacy Policy](#).

Accept Cookies

Reject Cookies

Manage Cookie Settings



AI, it's actual
e. Chat with us!



Notable Benefits

- Define policies through centralized cloud-based management for easy deployment at scale.
- Gain fast, reliable connectivity with an embedded Cat 11 or Cat 18 LTE modem.
- Add a second cellular modem for simultaneous dual-carrier LTE connectivity.
- Prioritize access on public safety networks for reliable, secure connectivity.
- Deploy Wave 2 dual-band, dual-concurrent, Gigabit Wi-Fi for the best possible connections.
- Integrate into Automatic Vehicle Location (AVL) systems with Active GPS.
- Provide a ruggedized solution to endure harsh environments.
- Configure GPIO ports for IoT and vehicle integrations.

Key Software Capabilities

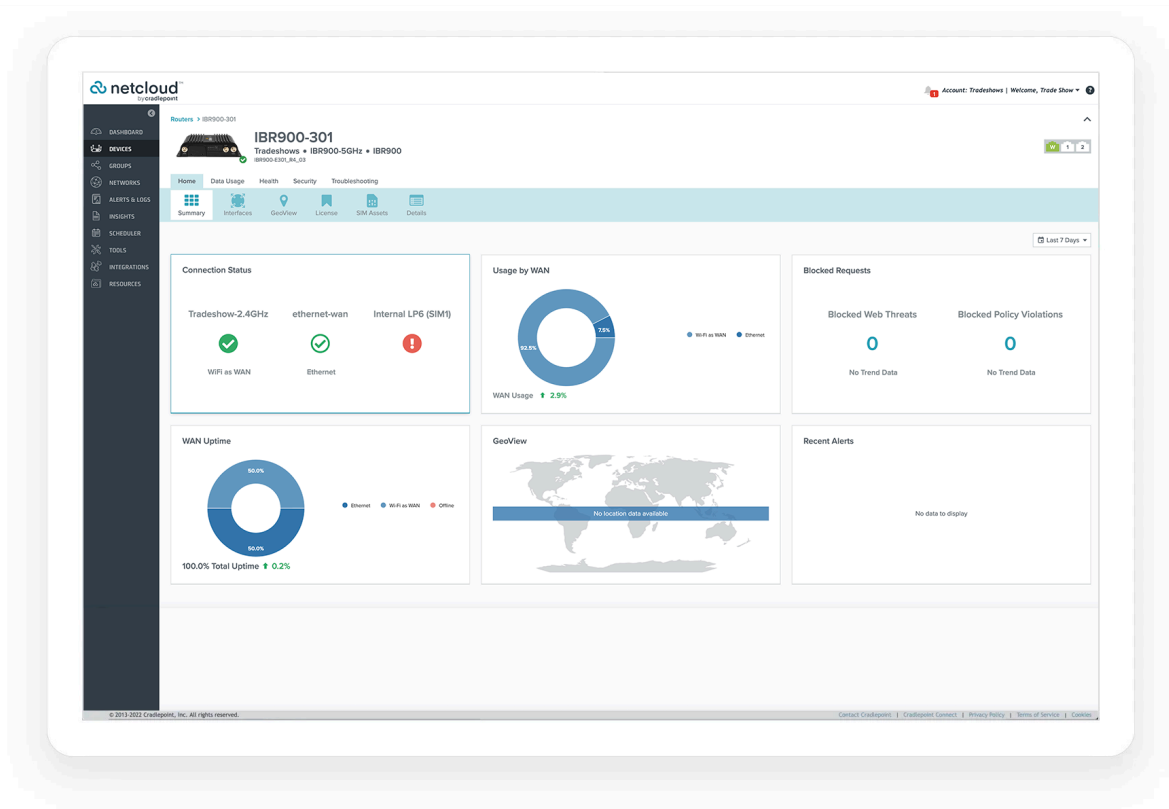
Cradlepoint NetCloud Service for the IBR900 provides everything needed to unlock the power of LTE and connect vehicles, users, and IoT to critical applications and services. The available NetCloud IoT or Mobile service plans include the appropriate router software with powerful cloud management features for managing IoT at scale, or mobile-specific features like coverage maps, and application aware analytics. Everything within NetCloud works together, making it easy to deploy, connect, and secure edge applications at scale across the organization.

Router Services

Next generation hardware provides local processing power to handle demanding router-delivered services, such as support for VPN tunneling encryption including DMVPN, IPsec, GRE, and other tunneling technologies.

We care about your privacy.

Ericsson Enterprise Wireless Solutions uses cookies and other methods to process the personal data that you provide in order to customize content and your site experience, analyze our traffic, and personalize our advertising. For more information on how we use your personal data, please visit our [Privacy Policy](#).

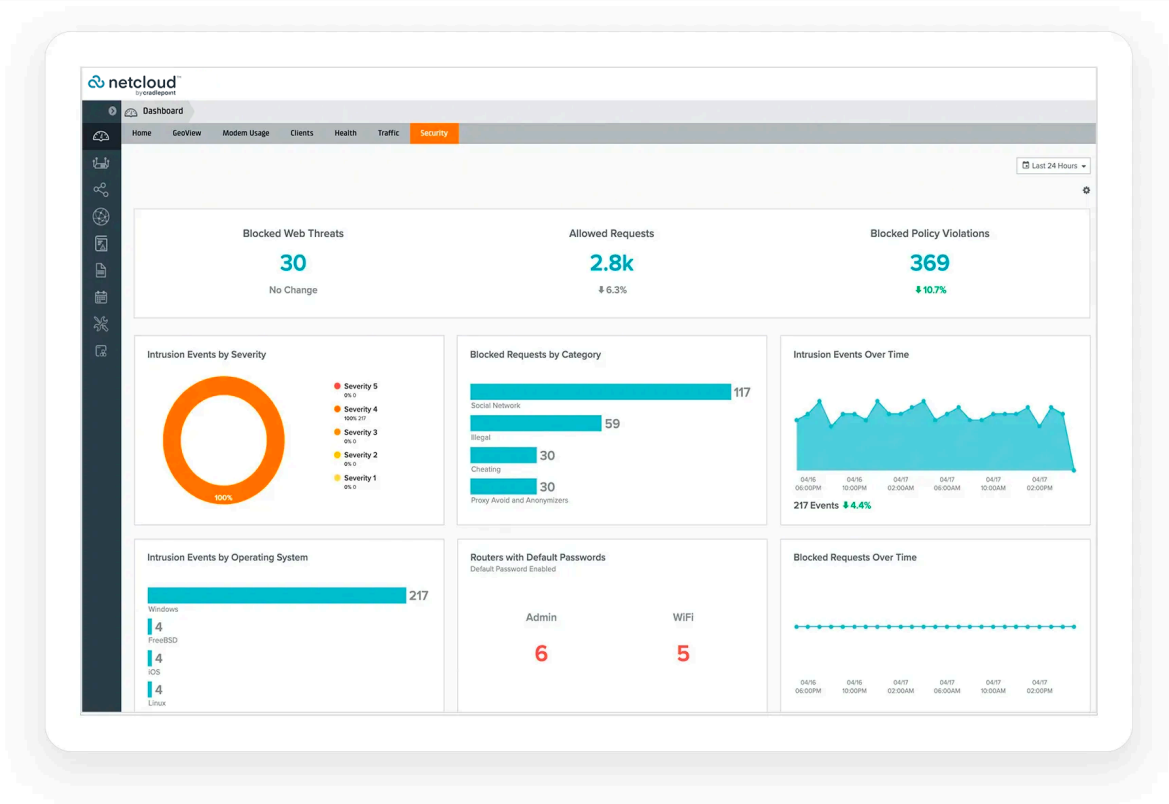


Security Services

NetCloud Service includes security features and options to optimize the IBR900 to meet the evolving security needs of mobile and IoT environments. The service includes stateful zone-based firewall with the ability to add application aware security policies with the Advanced Mobile service plan.

We care about your privacy.

Ericsson Enterprise Wireless Solutions uses cookies and other methods to process the personal data that you provide in order to customize content and your site experience, analyze our traffic, and personalize our advertising. For more information on how we use your personal data, please visit our [Privacy Policy](#).

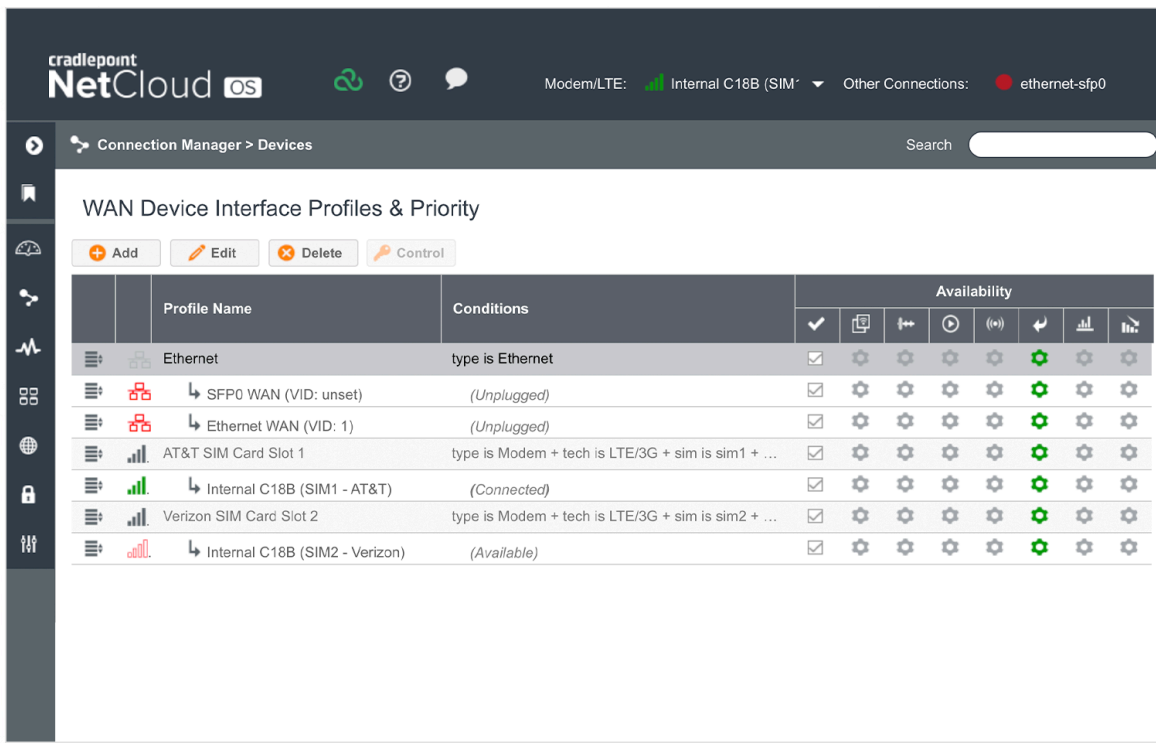


Connection Manager

Connection Manager provides the ability to manage all WAN connections types including wireless, Wi-Fi as WAN, and wired, from a single software-defined policy. Our custom-built modem software ensures users establish Wireless WAN connectivity faster while maintaining the highest level of resiliency.

We care about your privacy.

Ericsson Enterprise Wireless Solutions uses cookies and other methods to process the personal data that you provide in order to customize content and your site experience, analyze our traffic, and personalize our advertising. For more information on how we use your personal data, please visit our [Privacy Policy](#).

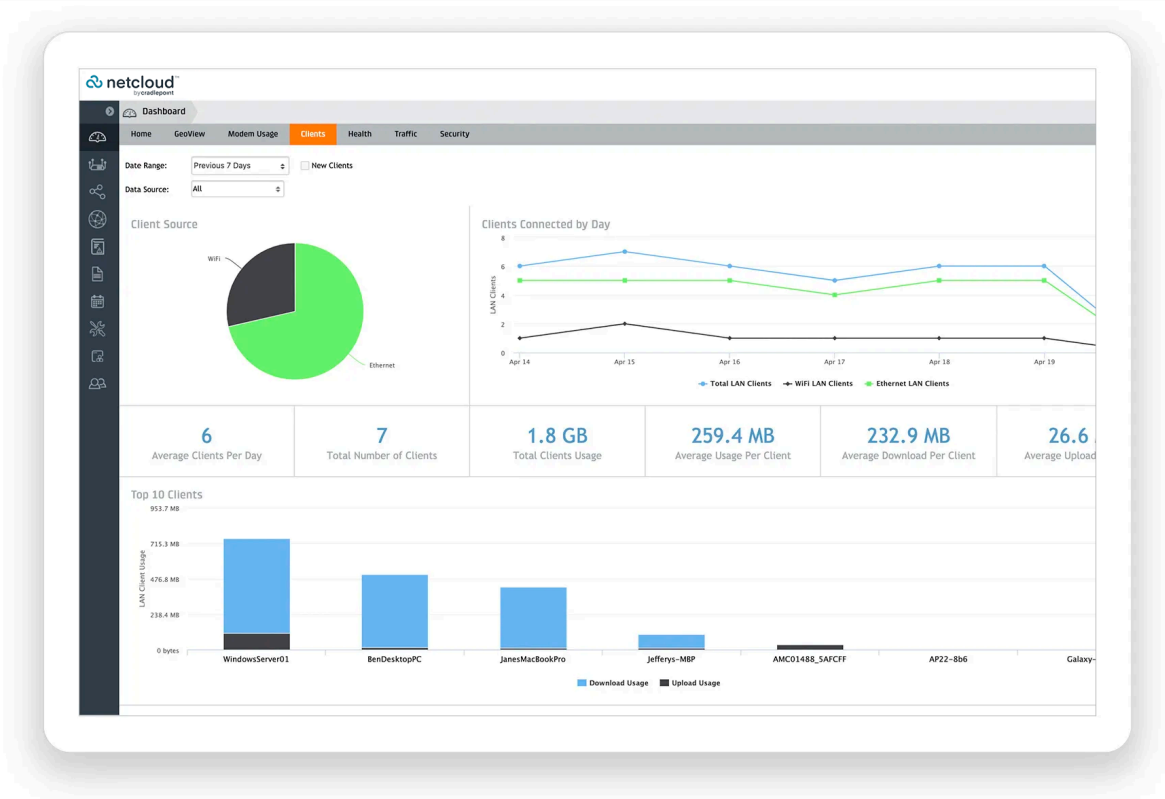


Cloud Services

NetCloud Manager delivers true zero-touch deployment with the ability to define and deliver policy across entire groups of endpoints. Users can create a cloud-orchestrated hub and spoke VPN network and gain insights and analytics required for rapid troubleshooting and diagnostic workflows. Support operations with real time location services and vehicle information.

We care about your privacy.

Ericsson Enterprise Wireless Solutions uses cookies and other methods to process the personal data that you provide in order to customize content and your site experience, analyze our traffic, and personalize our advertising. For more information on how we use your personal data, please visit our [Privacy Policy](#).



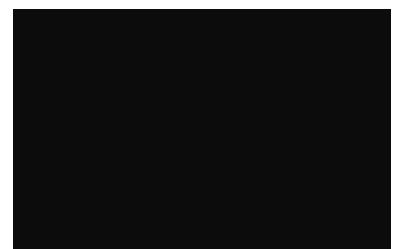
- ⌵ Hardware Specifications
- ⌵ Enterprise-Class Modem Specifications
- ⌵ Physical Measurements & Features
- ⌵ Ordering Guide
- ⌵ Accessories
- ⌵ Support & Warranty

More Information

[Find the most up-to-date information at cradlepoint.com/ibr900](https://www.cradlepoint.com/ibr900)

We care about your privacy.

Ericsson Enterprise Wireless Solutions uses cookies and other methods to process the personal data that you provide in order to customize content and your site experience, analyze our traffic, and personalize our advertising. For more information on how we use your personal data, please visit our [Privacy Policy](#).



TALK TO OUR SALES TEAM

1-855-813-3385

Products

Routers

Adapters

Radios

Ericsson Private 5G

Enterprise 5G Coverage

NetCloud SASE

Company

Contact Us

Trust & Security

Careers

Blog

About WWAN

Privacy

Manage My Preferences

Do Not Sell or Share My Personal Information

Browse Endpoints

Fixed Site Routers

Cellular Adapters

Vehicle Routers

IoT Routers

Cellular Access Points

Accessories

Compare Endpoints



NORTH AMERICA HQ
1100 W. Idaho Street
Suite 800

We care about your privacy.

Ericsson Enterprise Wireless Solutions uses cookies and other methods to process the personal data that you provide in order to customize content and your site experience, analyze our traffic, and personalize our advertising. For more information on how we use your personal data, please visit our [Privacy Policy](#).

We care about your privacy.

Ericsson Enterprise Wireless Solutions uses cookies and other methods to process the personal data that you provide in order to customize content and your site experience, analyze our traffic, and personalize our advertising. For more information on how we use your personal data, please visit our [Privacy Policy](#).